



Sirman Spa
 Viale dell'Industria 9/11
 35010 PIEVE DI CURTAROLO (PD), Italy
 Tel./Fax. +39 049 9698666 / +39 049 9698688
 email: info@sirman.com



Sirman Упаковщики вакуумные , model W8 30.40.50 :

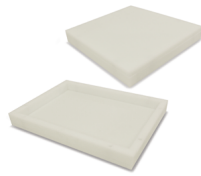
- Its extraordinary design reduces the dimensions of the machine and improves its handiness
- A large-volume cover-plate made of high thickness thermoformed Plexiglas
- Easily removable sealing bar
- Electronic control System featuring:
 - 6 languages selection
 - Sealing, vacuum and gas time settings, with 1/10 sec scale.
 - Vacuum percentage and time left display
 - 8 storable programmes
 - A programme = automatic vacuum
 - X programme = external suction
 - Oil replacement signal.
 - Bush suction pump.
- 5 mm thick, AISI 304 stainless steel, easy to clean plain vacuum chamber.
- Extremely easy to clean thanks to the perfectly plain surface.
- Optional:
 - gas and soft air release system
 - Adjustable shelf sacs containing liquids
 - methacrylate containment tray.

Legend of models:

DX = DVP suction pump / stainless steel holding surface
 BX = Bush suction pump / stainless steel holding surface
 DB = Double sealing bar



Optional tube for external air extraction



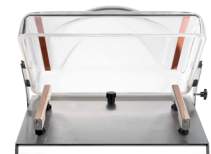
Optional polyethylene plate for containment and upward



Aluminium table base for W8 50 - optional - mm 586x564 h.757



Aluminium table base for W8 50 - optional with wheels - mm 586x564 h.765



Double sealing bar W8 50 DB



Standard sealing bar



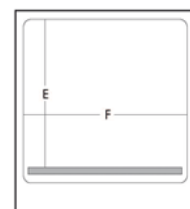
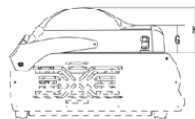
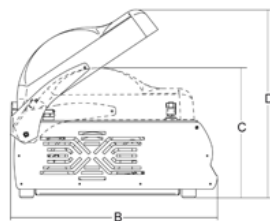
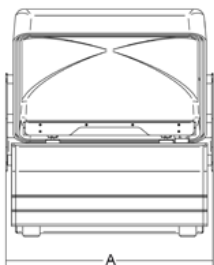
Optional integrated printer



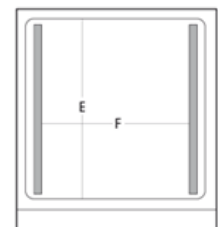
Gas-flush and soft air option



спецификация



30-40-50



50 DB

технические данные

Модель	W8 - 30	W8 - 30 - 12	W8 - 40	W8 - 50	W8 50
Мощность	kw 0,35	kw 0,45	kw 0,75	kw 0,75	kw 0,75
Электропитание	230V 50Hz F+N	230V 50Hz F+N	230V 50Hz F+N	230V 50Hz F+N	230V 50Hz F+N
Вакуумный насос	8 mc/h	12 mc/h	21 mc/h	21 mc/h	21 mc/h

Уплотнительная бара	mm 310	mm 310	mm 410	mm 510	mm 610
Размеры полости	mm 340x360 h.130	mm 340x360 h.130	mm 430x410 h.140	mm 545x460 h.190	mm 645x560 h.240
A	mm 402	mm 402	mm 493	mm 609	mm 725
B	mm 525	mm 525	mm 585	mm 640	mm 745
C	mm 360	mm 360	mm 370	mm 420	mm 470
D	mm 480	mm 480	mm 542	mm 605	mm 668
E	mm 333,5	mm 333,5	mm 390	mm 430	mm 470
F	mm 340	mm 430	mm 430	mm 540	mm 650
G	mm 85	mm 85	mm 85	mm 90	mm 95
H	mm 140	mm 140	mm 150	mm 200	mm 250
Вес нетто	kg 46	kg 46	kg 56	kg 68	kg 80
Размеры упаковки	mm 580x690x480	mm 580x690x480	mm 580x690x480	mm 700x740x520	mm 820x860x600
Вес брутто	kg 58	kg 58	kg 68	kg 80	kg 92